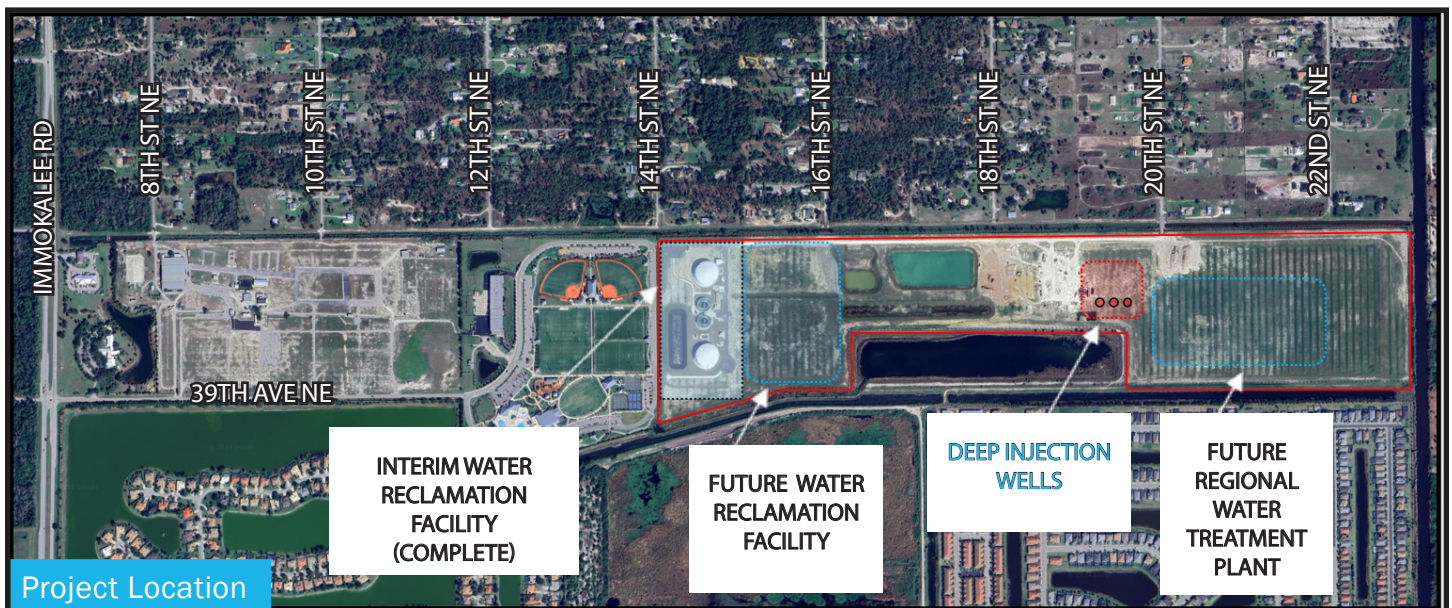


You may have noticed some additional construction activity at the Northeast Service Area (NESA) utility site recently. Collier County Public Utilities is currently building two deep injection wells at the NESA site.

The utility site has been the focus of extensive planning efforts over the last two decades. In the last five years, numerous construction projects have successfully reached completion. Furthermore, there are several additional projects slated for development in the near future. As part of this comprehensive plan, construction will continue beyond the DIW project to encompass the development of additional critical facilities. This includes the establishment of a regional water treatment plant, the construction of water reclamation facilities, and the enhancement of other essential utility infrastructure that will greatly benefit the community by ensuring reliable access to clean water and efficient wastewater management that will ultimately enhance our quality of life.

These initiatives are designed to ensure sustainable water management and improve overall service delivery within the region. In the meantime, construction brings challenges of noise, lights and traffic. We appreciate your patience as crews work to complete the project.



Deep Injection Well Construction:

Right now, we're constructing the next phase of the site which includes two deep injection wells at the site. A deep injection well is a well-established technology that's widely used in the U.S. as a viable method to dispose of liquids from water and wastewater treatment facilities. These are very deep wells, far below the level of drinking water sources and will not affect much shallower residential wells. This is a multi-year project and we understand your concerns regarding the construction noise and lights associated with it. The 24/7 construction schedule is the permitted and industry standard for building a deep injection well and allows us to complete the project more quickly.

We are closely monitoring conditions at the site to minimize disturbances. We have instructed the contractor to reduce lighting while maintaining a safe working environment for our nighttime crews. We are also addressing concerns about dust, traffic, and material deliveries. Please be assured that the tall structures (drill rigs) you see now are temporary and will be removed when the well is complete. Once the construction drilling is complete, the deep injection well will not be visible. The project also includes drilling monitoring wells to ensure there are no environmental impacts from the deep injection wells. Estimated completion of this project is end of 2026.



Collier County

Collier County Public Utilities
c/o CMA Outreach, Inc.
3860 Colonial Blvd., Suite 201
Fort Myers, FL 33966



Collier County

Northeast Service Area Deep Injection Well Update

November 2024

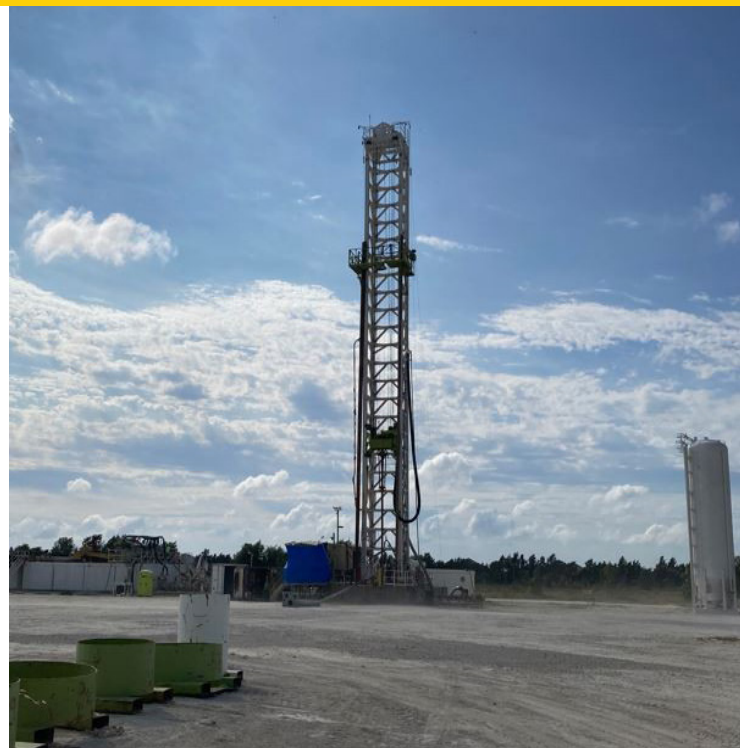
Deep Injection Well

The Northeast Service Area (NESA) Deep Injection Well (DIW) Project has begun. The DIW system includes two Deep Injection Wells, and one Monitoring Well. The injection wells will be utilized to dispose of concentrate from the Future Water Treatment Plant processes (membrane softening and reverse osmosis) and excess reclaimed wastewater from the Water Reclamation Facility. Collier County Public Utilities respects civic engagement and listens to resident concerns. We will continue to solicit and address community input on this project.



**STAY CONNECTED,
STAY INFORMED**

For questions or concerns,
phone at (239) 337-1071
or email to info@CollierNesa.com.



www.CollierNesa.com