

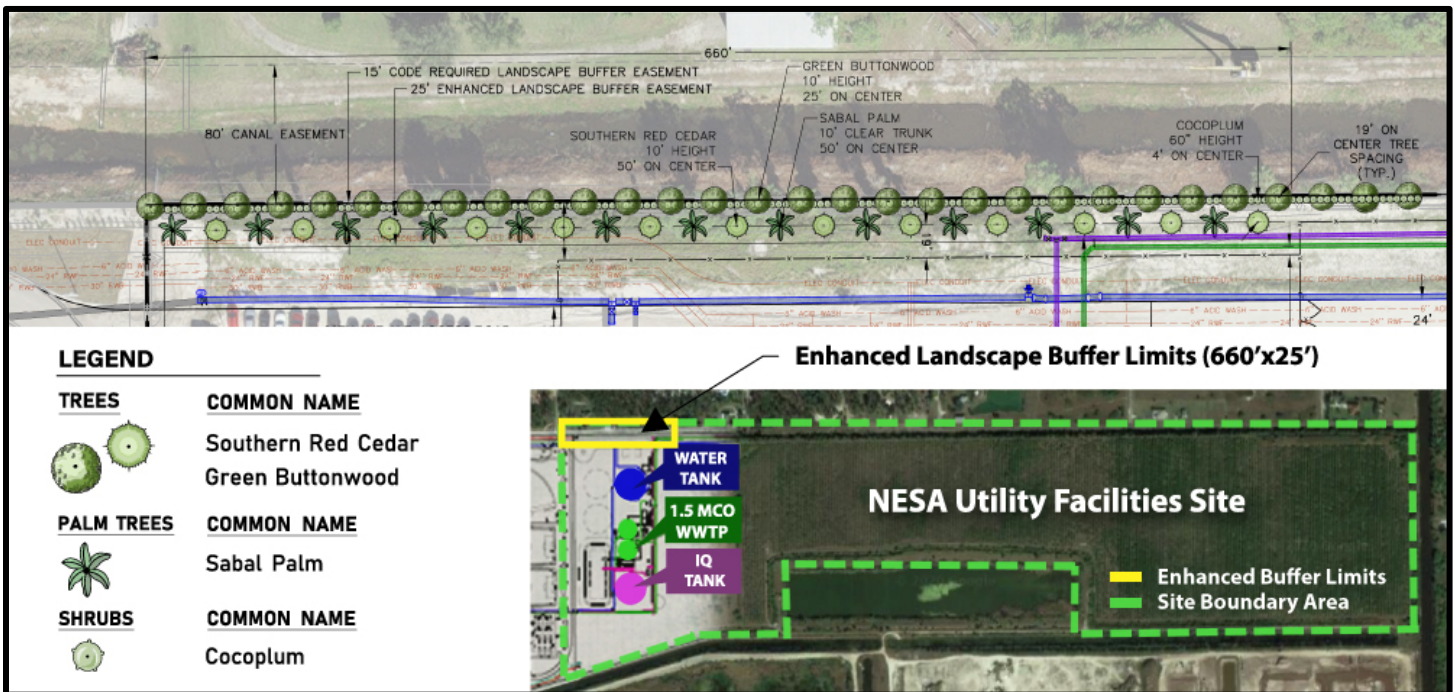


**Northeast Service Area (NESA) Utility Extension Project
Landscape Buffer Update
October 2021**

Collier County will install enhanced landscaping north of the storage tanks at the NESA utility site. This is based on feedback from neighbors who attended the February 11, 2021 Neighborhood Information Meeting. The County strives to be a good neighbor while building facilities that improve the community's utility services. We collaborated with a master gardener from the UF/IFAS Extension Center to develop an enhanced landscape buffer along the northwest portion of the utility property. Upgrades include a second row of plantings with faster growing trees and shrubs. This enhanced buffer will improve the visual screening of the NESA utility facility and its storage tanks. We plan to install the landscaping in 2022.

The enhanced landscape buffer will be approximately 660 feet long and 25 feet wide with two rows of trees and shrubs. The first row is designed to include native **Green Buttonwood** trees and **Cocoplum** shrubs. The second row is designed to contain native **Southern Red Cedar** trees and **Sabal Palm** trees. These enhanced landscape options will create additional screening and provide habitat and forage for native wildlife. More information on the different plant species can be found at www.edis.ifas.ufl.edu. For example, simply type "buttonwood" into the "What can we help you with?" search bar to learn more. Enhanced landscape buffer renderings at installation, three-year and five-year growth can be found on the project website at www.CollierNESA.com.

The water and wastewater facilities at NESA will provide services to new communities in the eastern part of the County and will improve reliability of the existing regional facilities. The NESA project is part of Collier County's program to build infrastructure to meet the growing demand for water and wastewater service. This represents our continued commitment to improving the County's infrastructure.



For information about the project, please visit www.CollierNESA.com or contact Collier County's public information consultant for the project:

Cella Molnar & Associates, Inc.

239-337-1071

1-877-496-1076 (toll free)



ENHANCED
LANDSCAPE
BUFFER AT
INSTALLATION



ENHANCED
LANDSCAPE
BUFFER AT
THREE-YEAR
GROWTH



ENHANCED
LANDSCAPE
BUFFER AT
FIVE-YEAR
GROWTH

